



Celebrating 21 Years of Tameside Local History Forum



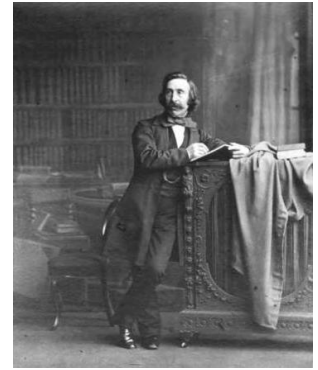
'At school History was my favourite subject. Years later I suddenly looked around and what did I see - History - my History. I suddenly realised I just needed to open my door and step outside'. M. Brownson

8. Some More Successful Projects

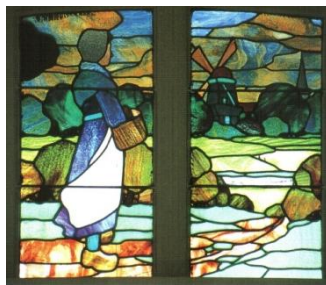
Foley Sculpture

This bas-relief Carrara marble is to the memory of John Whittaker I (1776 - 1840), the founder of Higher Hurst. The artist commissioned to make it was J H Foley, best known for the statue of Prince Albert in the Albert Memorial in London. It was placed on Queen's Road MNC Chapel in 1861 and, on the closure of the chapel, it was transferred to Hurst Community Centre where it was unfortunately damaged by a fire in 2000. Pevsner described it as 'an uncommonly fine, tender piece'. Through the efforts of Emma Varnan of Portland Basin Museum, Alan Rose & Christine Clough (TLHF) among others, the work, although in 20 pieces is to go into Portland Basin after restoration.

Foley Sculpture & Artist J H Foley (right)



Old Chapel Dukinfield



Tameside Hospital



Replacement Stained Glass window from Ashton Market original destroyed in fire

Tameside Stained Glass Project

The Tameside Stained Glass project was set up by TLHF. Its aim is to compile a photographic record of all the stained glass in the buildings of Tameside both secular and religious, with details of the artist and glass maker.

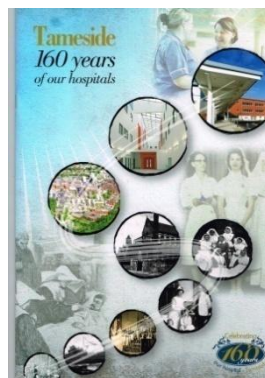
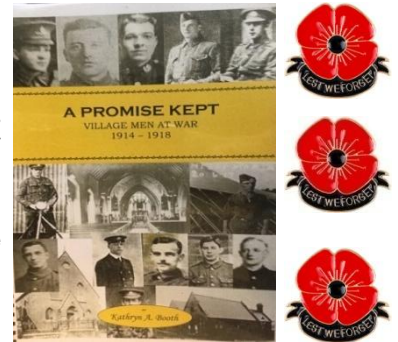
WHY A PROMISE KEPT? (MILLBROOK GREAT WAR PROJECT)

For years, my grandfather cleaned a tablet in the lynch gate of St James's Church, Millbrook, to honour his friends who had not returned from war, or been badly injured. Years later, I did what I could to keep their memory fresh.

In 1911, Millbrook had a population of 2,915 of which 1,400 were male... how many were adult is unrecorded. Hundreds of these men enlisted, and by the end of 1919 232 were dead. Yet there was no comprehensive memorial to them.

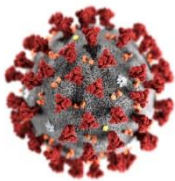
With a great deal of help, I produced my testament to him to honour the men from the Millbrook area.

K Booth



Celebrating 160 Years of Tameside Hospital

As part of the 'Health Investment in Tameside' project, a major development to modernise the hospital estate at Tameside began in 2006. In September 2011, to celebrate the opening of the new hospital building, which has been erected on the site of the original work house built in 1851, a book was commissioned (cover left) which TLHF played a major part in the research and helping to complete.



31 January - First confirmed cases of COVID-19 in UK

2020



2021

6 January - Third national lockdown begins, with a phased reduction of restrictions.

24th March- The Reporter records the first COVID-19 cases in Tameside



30 August - The £32.7 million Tameside Transport Interchange was opened in Ashton-under-Lyne



Planning permission is granted for the historic Roe Cross Inn, Mottram-in-Longdendale, to be converted into apartments.



Tameside swelters in some of the hottest temperatures ever recorded in July, 30°C in Droydsden